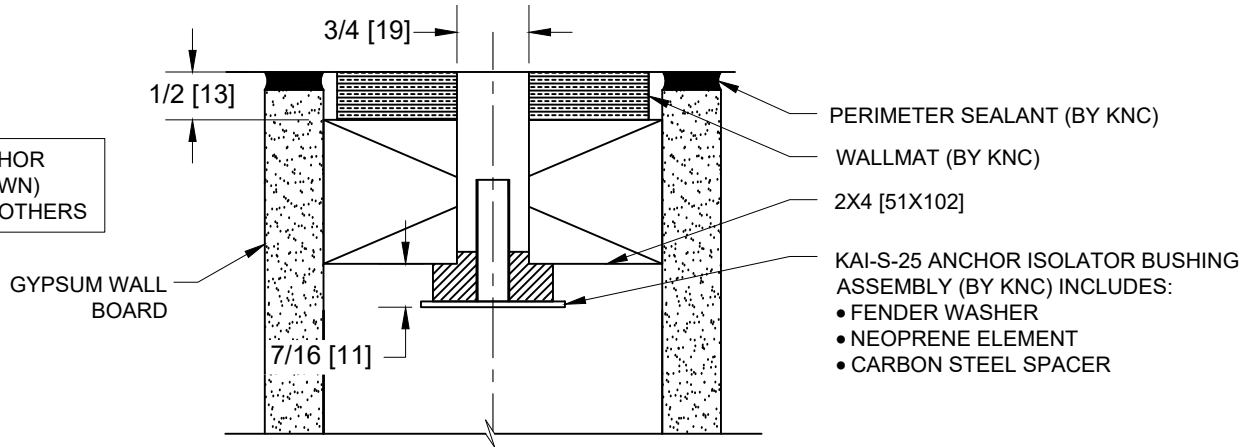


TOP OF WALL

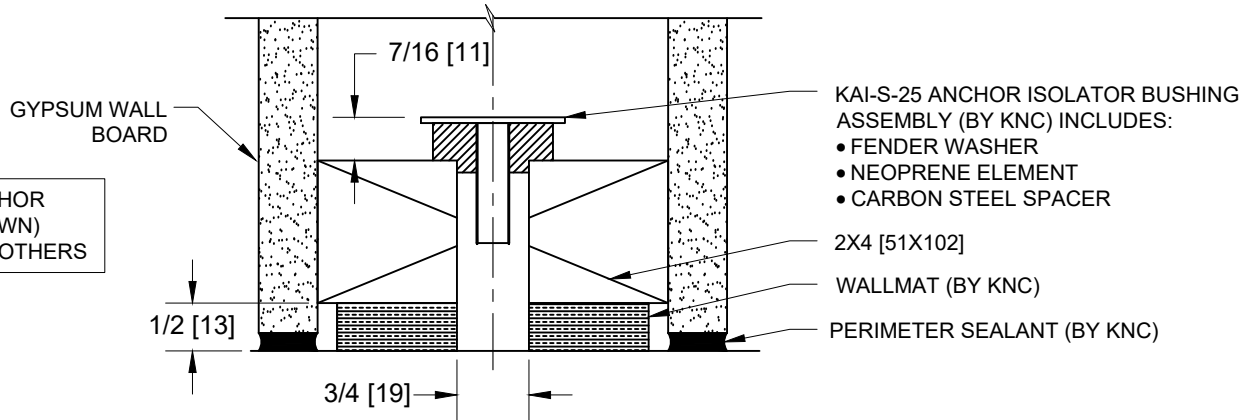
1/4 [6] ANCHOR
(NOT SHOWN)
PROVIDED BY OTHERS



- PERIMETER SEALANT (BY KNC)
- WALLMAT (BY KNC)
- 2X4 [51X102]
- KAI-S-25 ANCHOR ISOLATOR BUSHING ASSEMBLY (BY KNC) INCLUDES:
 - FENDER WASHER
 - NEOPRENE ELEMENT
 - CARBON STEEL SPACER

BASE OF WALL

1/4 [6] ANCHOR
(NOT SHOWN)
PROVIDED BY OTHERS



- KAI-S-25 ANCHOR ISOLATOR BUSHING ASSEMBLY (BY KNC) INCLUDES:
 - FENDER WASHER
 - NEOPRENE ELEMENT
 - CARBON STEEL SPACER
- 2X4 [51X102]
- WALLMAT (BY KNC)
- PERIMETER SEALANT (BY KNC)

KAI-W NOTES

- TYPICALLY LOCATED 16 [406] OR 24 [610] ON CENTER
- ACCEPTS 1/4 [6] ANCHORS (BY OTHERS)
- REQUIRES MINIMUM 3/8 [10] DIA. HOLE THROUGH MODEL WALLMAT
- REQUIRES DRILLING 3/4 [19] DIA. COUNTERSINK INTO WOOD PLATE TO SEAT NEOPRENE ELEMENT

DIMENSION FORMAT: IN [MM]

SCALE: 6" = 1'-0"



WALLMAT:
WOOD-FRAMED INSTALLATION

Revised
5/15/2020

Drawing No.
AA001812

kineticsnoise.com/wallmat